



**Participate
Learning**

Uniting Our World

Global Leadership Framework

Uniting Our World Through Global Learning

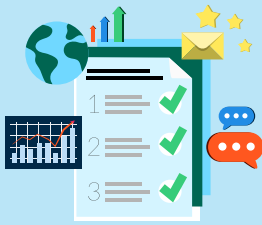
Together for tomorrow

Join the Participate Learning Global Leaders Community, a network of like-minded schools with a global focus. Collaborate with us as you implement the Participate Learning Global Leadership Framework and provide opportunities for students to lead and thrive in their future careers.

participatelearning.com

Participate Learning Global Leadership Framework:

Our global approach provides a strong structure for unifying school-wide initiatives. Use the Global Leadership Framework as a foundation to achieve the following goals:



Equip and empower school administration with the knowledge and tools needed to collectively lead a school community with a unified global focus.



Enable schools to build a culture that promotes global citizenship and leadership for all staff and students.



Equip teachers to design learning experiences for students that build competencies that will prepare them to lead in a complex and changing world.

As students engage in global learning, they develop a combination of attitudes, skills, and knowledge that demonstrate **10 core competencies**. These competencies empower learners to pay attention to the world, feel connected, and take action to make it a better place.

What does it mean to be a global leader?

1 Critical thinking

I can solve tough problems.

2 Respect for difference

I learn from people who are different from me.

3 Understanding of global issues

I understand the causes, impacts, and connections between issues like poverty, equity, and climate change.

4 Global connection

I am part of a larger world and am responsible for it.

5 Intercultural understanding

I know that culture is a way of life that connects people and that cultures have differences and similarities all over the world.

6 Curiosity

I genuinely want to learn about the world.

7 Communication

I can understand and express myself with different kinds of people.

8 Empathy

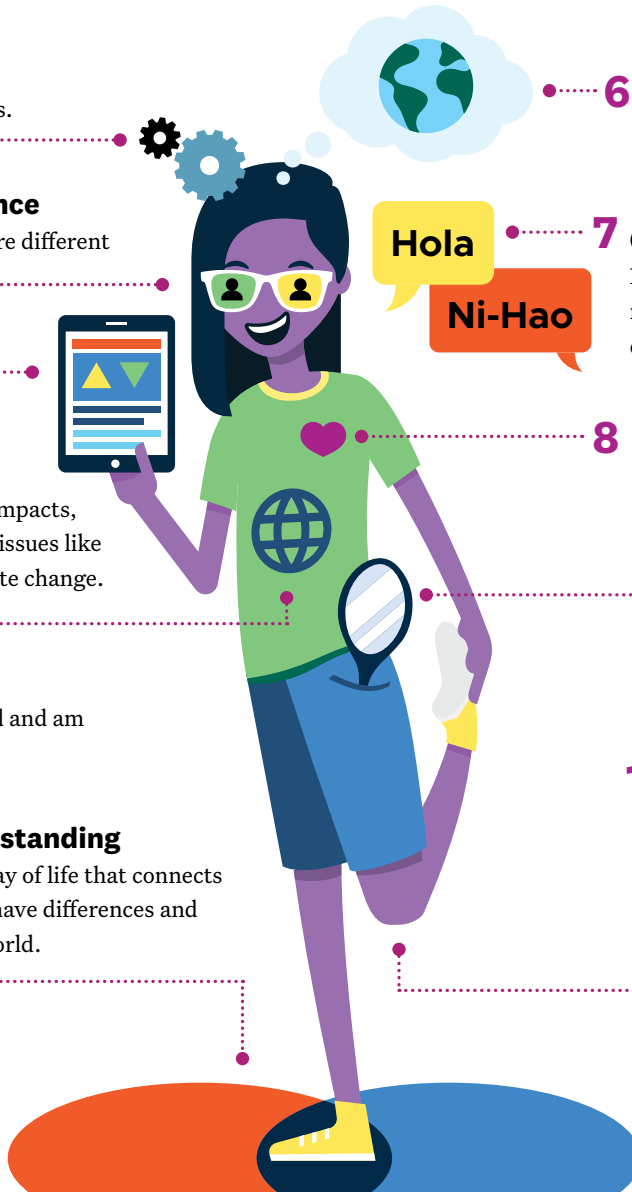
I can see things from other people's perspectives.

9 Self-aware

I reflect on the people and experiences that have made me who I am.

10 Flexibility

I can adapt and learn from mistakes.



Benefits of the Global Leadership Framework:

Our framework consists primarily of professional learning for teachers that equips them to implement a global experience for all staff and students in their schools. Main components of the framework are outlined below:

Professional Development

Our services support in-person, blended, or online learning. We provide a variety of flexible options and approaches to meet the specific needs of our partners, such as:

- Access to the Global Leaders Community of Practice, an online professional learning space with a dynamic collection of materials, instructional tools, lesson plans, and professional learning experiences for teachers
- Asynchronous courses
- Synchronous or recorded webinars
- Live chats

Implementation Strategies

A sound implementation plan is critical for the success of any initiative. Our support provides school administrators and their global leadership team with the right tools to ensure long term success.

Leadership Coaching

Participate Learning staff provide coaching to assist the school administration and global leadership teams with goal planning, implementation planning, tracking, and evaluating success of implementation.

Exemplar Activities

A library of exemplar units, projects, and lessons that demonstrate how to integrate content curriculum and global competencies through action-based learning and can be adapted to meet teacher and student needs.

Our Framework aligns to several key initiatives:



Ready to redefine learning?

Join hundreds of other schools who are part of the Global Leaders Community by contacting partnerships@participatelearning.com or by visiting participatelearning.com.

